



Park Avenue, Nuneaton, CV11 4PQ

Loveitts

PART OF | SHELDON BOSLEY KNIGHT

Property Description

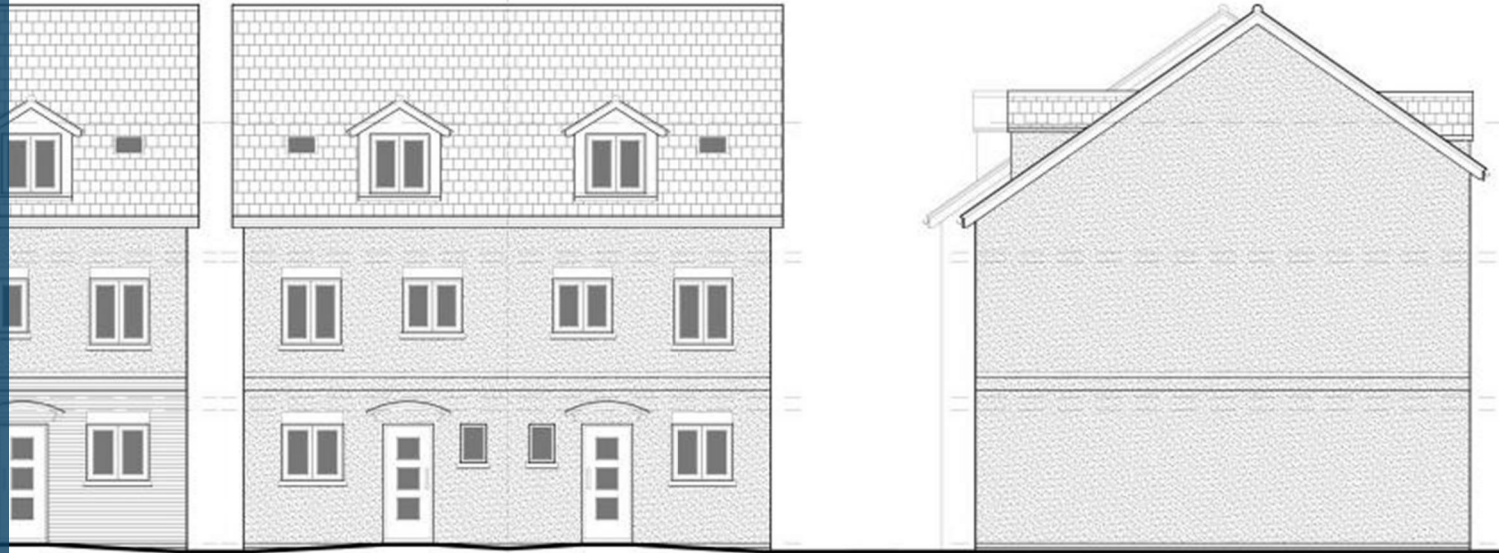
An excellent residential development opportunity comprising just under 0.3 acre parcel of land located to the rear of 9-15 Park Avenue, in the popular and well-established area of Attleborough, Nuneaton. This prime site benefits from full planning permission for the erection of five well-proportioned three-bedroom houses, ideal for private sale, or buy to let. The development would lend itself to being in a gated cul-de-sac driving a premium element to the house sales.

Planning consent was granted by Nuneaton and Bedworth Borough Council under reference 039374, permitting the development of five two and a half-storey three-bedroom houses, each with private gardens and on-site parking.

Location:

The site is situated behind 9-15 Park Avenue, within walking distance of local shops, schools, and amenities.

Nuneaton town centre is approximately 0.5 mile away, providing rail links to Coventry, Birmingham, and London Euston. The area is popular with families, professionals, and commuters alike

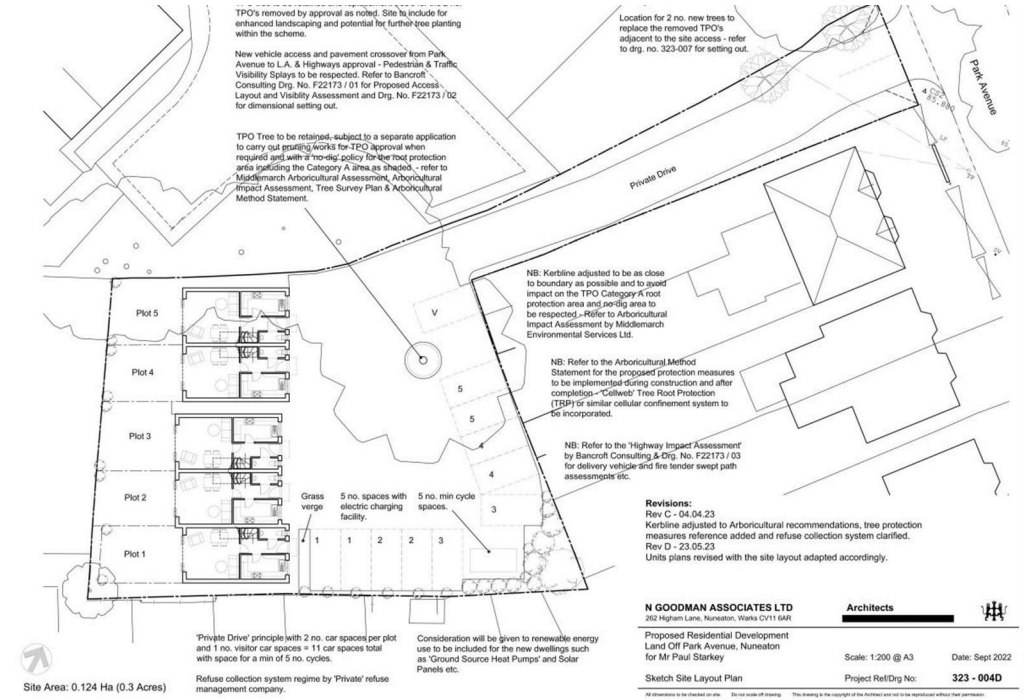


Side Elevations (Northwest) @ 1:100



Side Elevations (Southeast) @ 1:100

Rear Elevations (Southwest) @ 1:100



Key Features

- Planning Approved for 5 x 3-bedroom houses
- Quiet and private cul-de-sac setting
- Excellent transport links to Nuneaton town centre, A5, and M6
- Popular House Types
- Utilities and services available nearby (subject to verification)
- Freehold

£379,950